

# The SIMSSA DB Data Model

Presented by Emily Hopkins

SIMSSA DB team: Cory McKay, Gustavo Polins Pedro, Yaolong Ju,  
Ichiro Fujinaga, and Julie Cumming

SIMSSA Workshop XVII: Infrastructure for Music Discovery  
CIRMMT, McGill University, Montreal QC, 1 Dec. 2018

**How do we model music?**

**How do we track provenance?**

Digital musicologists want to study abstract **works**.

Digital musicologists want to study abstract **works**.

e.g. “Beethoven’s Third Symphony”



Digital musicologists want to study abstract **works**.

e.g. “Beethoven’s Third Symphony”

Libraries and databases deal with describing and storing **items**.

Digital musicologists want to study abstract **works**.

e.g. “Beethoven’s Third Symphony”

Libraries and databases deal with describing and storing **items**.

e.g. “IMSLP46066-PMLP02581-Op.55.pdf”

# IFLA-LRM

(International Federation of Library Associations and Institutions -- Library Reference Model)

**Work:** Beethoven Symphony  
No. 3

**Expression:** piano reduction,  
study score

**Manifestation:** particular  
edition (e.g., Breitkopf &  
Härtel, 1862)

**Item:** specific object (the file  
as it exists stored on IMSLP)

## IFLA-LRM

**Work:** Beethoven Symphony No. 3

**Expression:** piano reduction, study score

**Manifestation:** particular edition (e.g., Breitkopf & Härtel, 1862)

**Item:** specific object (the file as it exists stored on IMSLP)

## SIMSSA DB Data Model

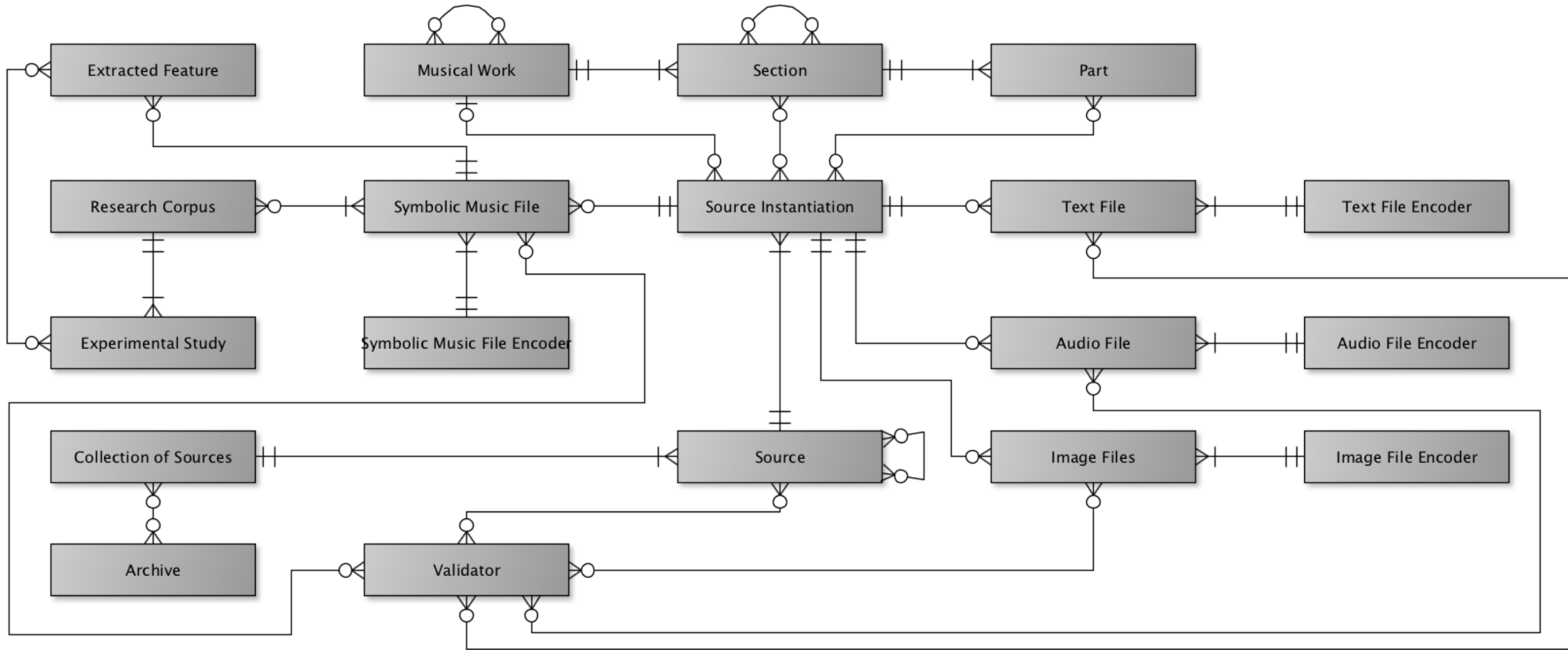
**Work:** Beethoven Symphony No. 3

**Related work:** piano reduction

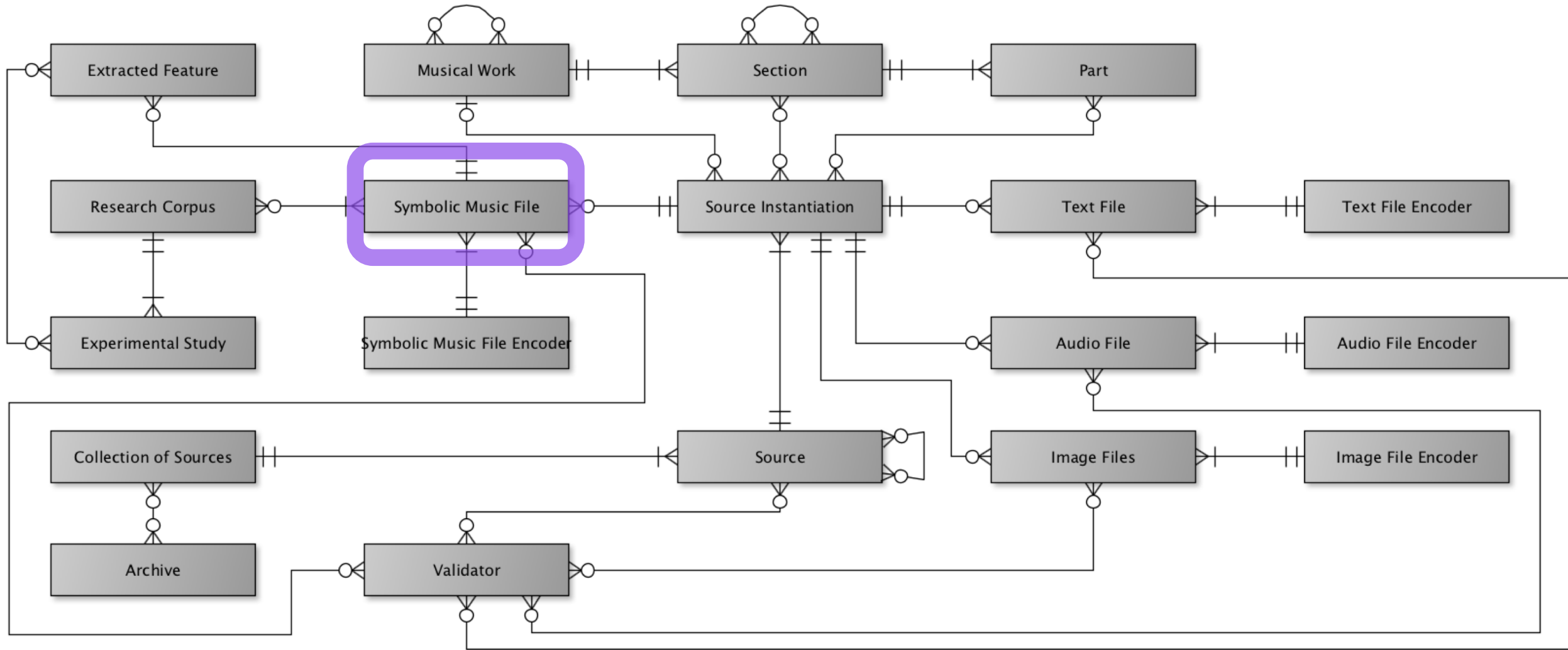
**Source:** particular edition (e.g., Breitkopf & Härtel, 1862)

**File:** specific object (the file as it exists stored on IMSLP)

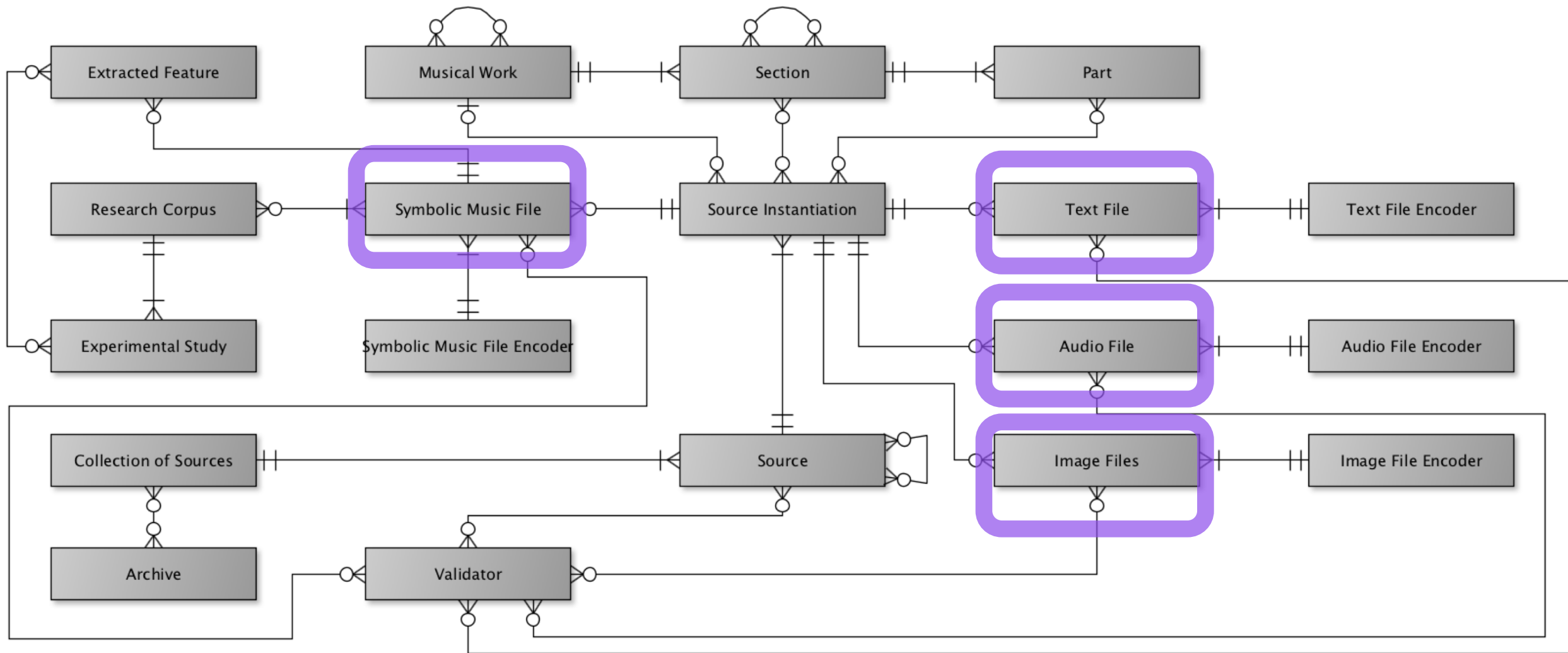
# Entity-Relationship Diagram



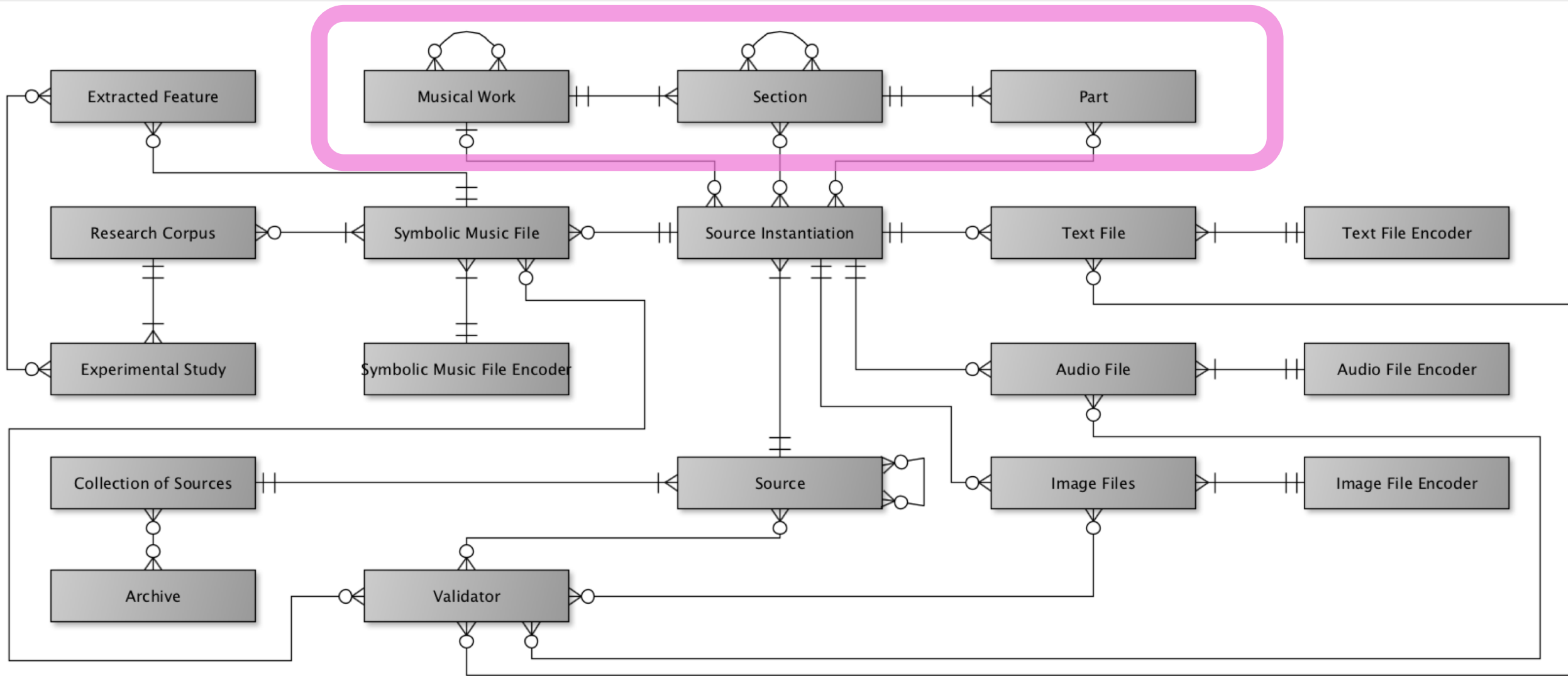
# Symbolic Music Files



# Support for different file types



# Modelling Musical Works



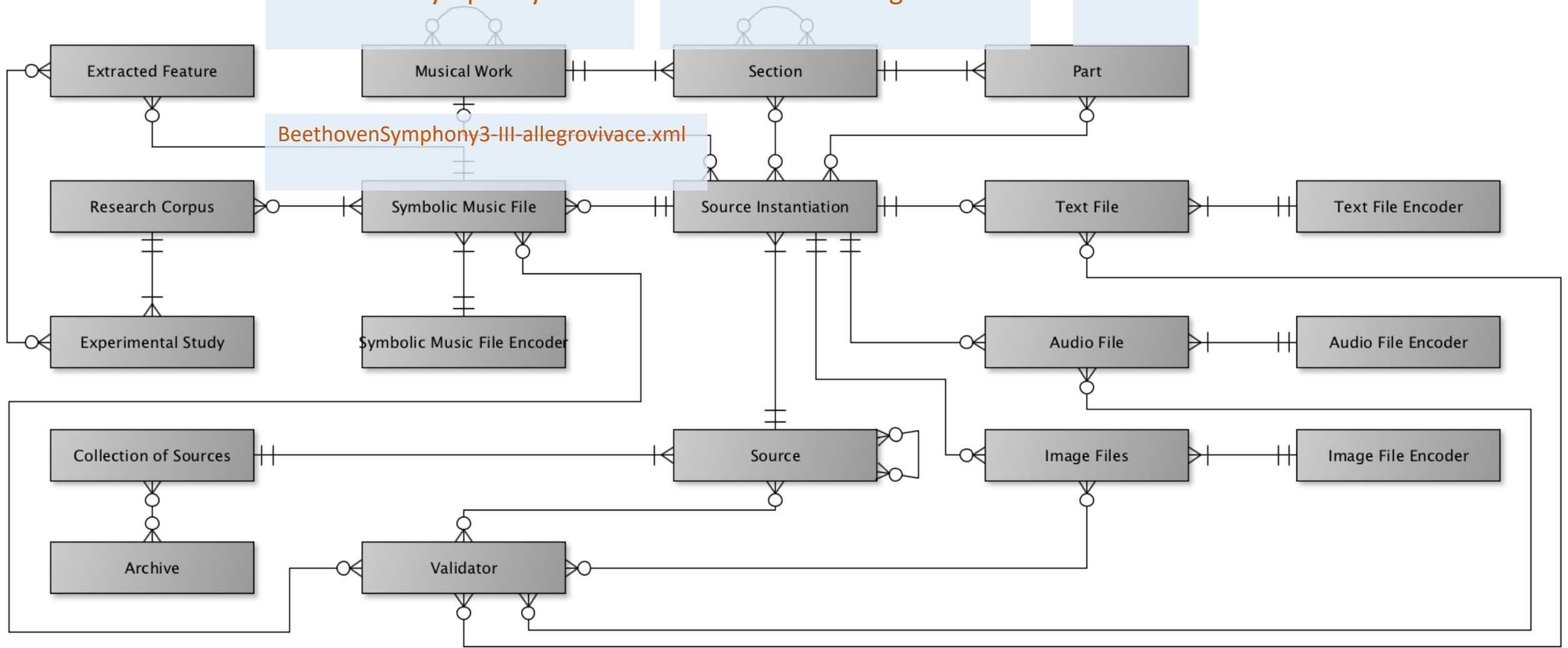


Beethoven Symphony No. 3

Movement 3: Allegro vivace

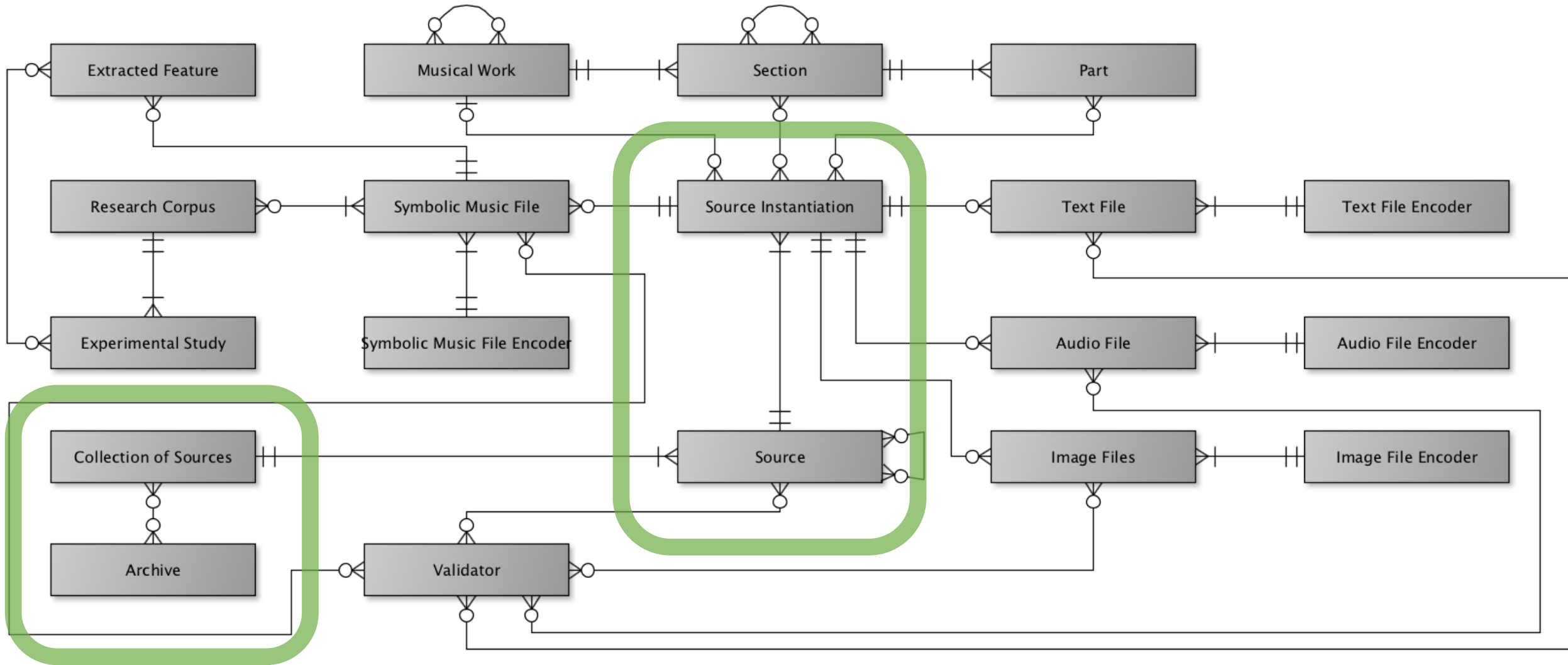
Oboe I

BeethovenSymphony3-III-allegrovivace.xml

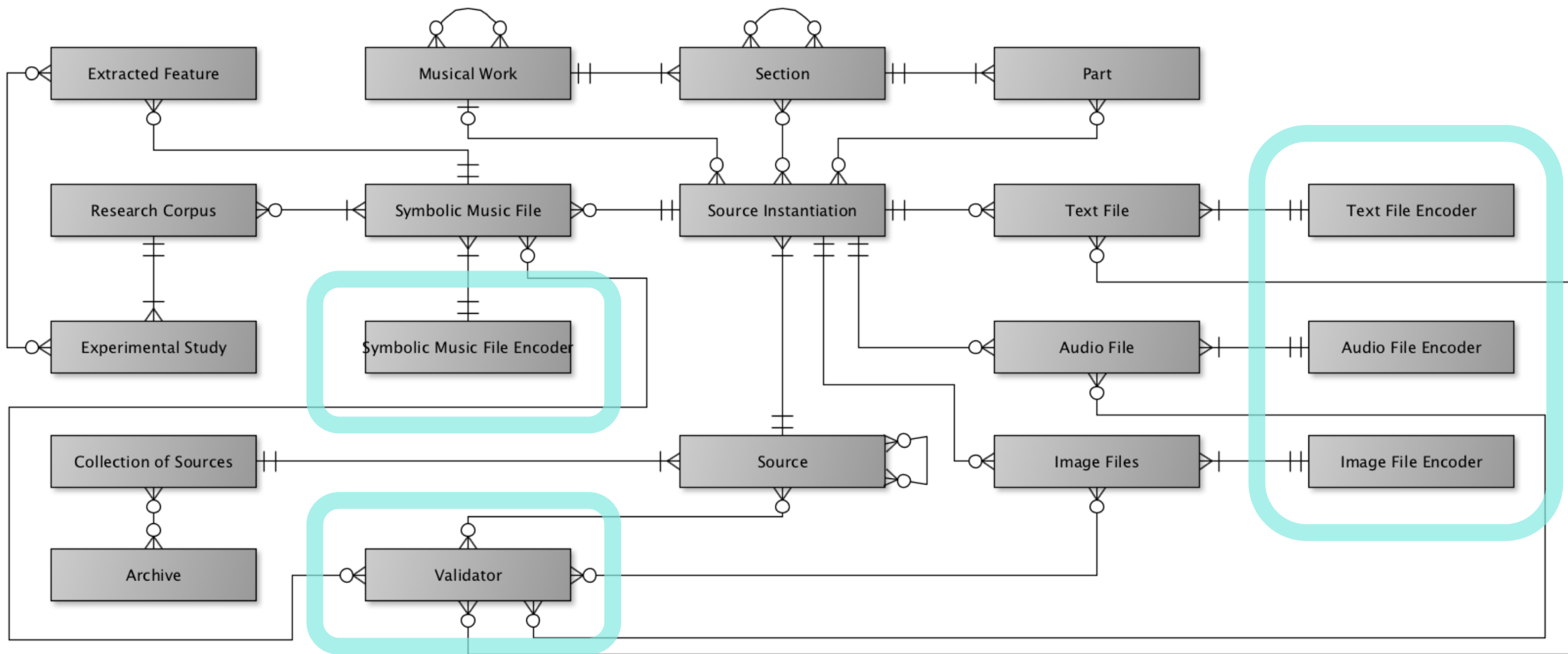


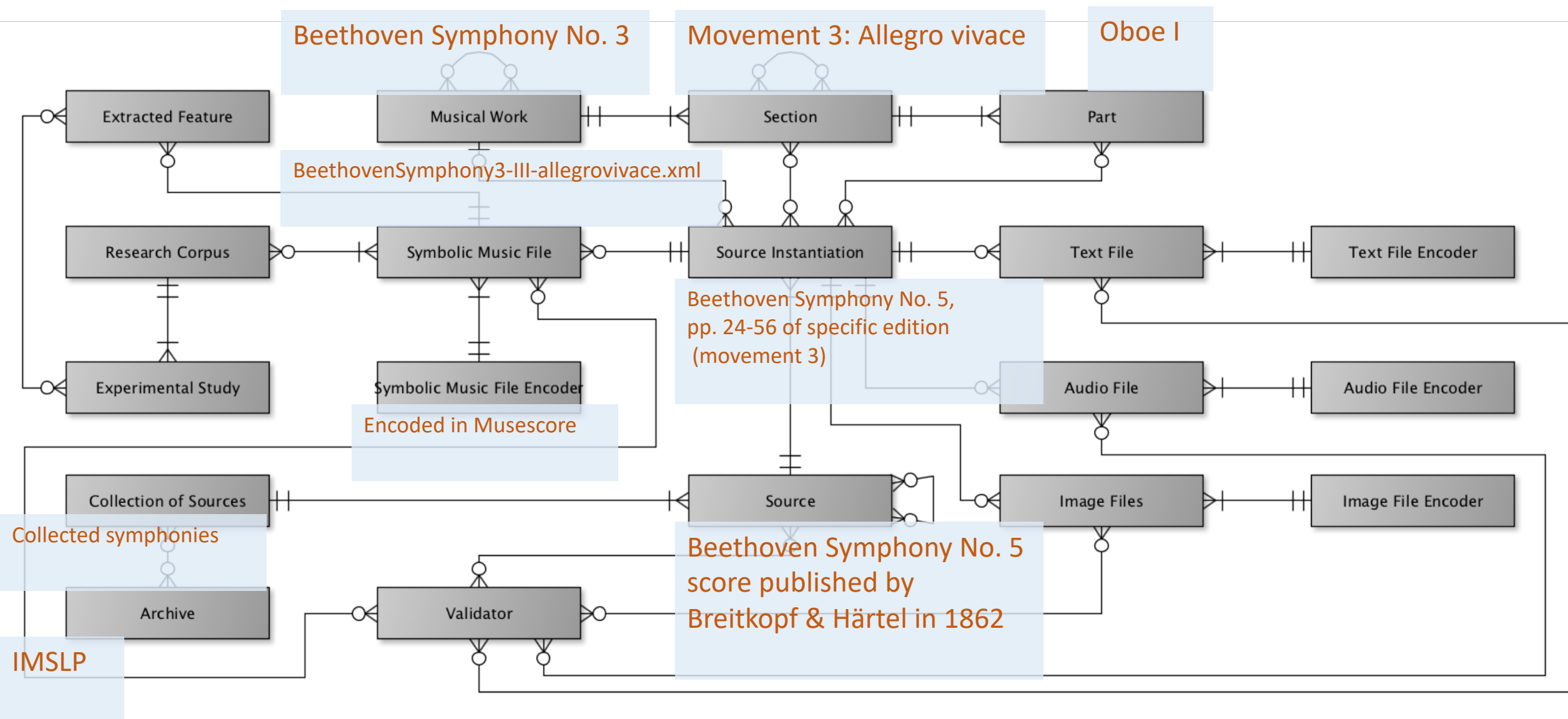
# How do we track provenance?

# Tracking Provenance

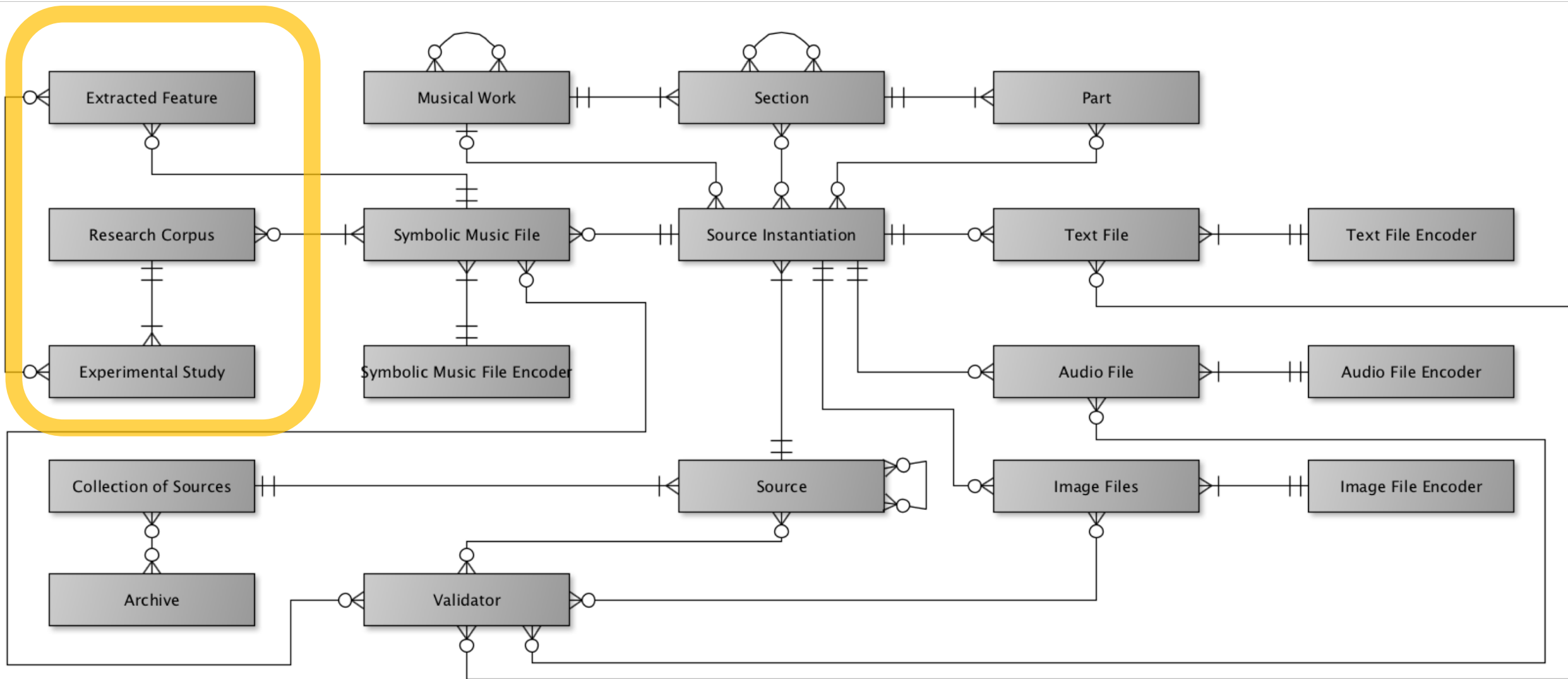


# Tracking Provenance





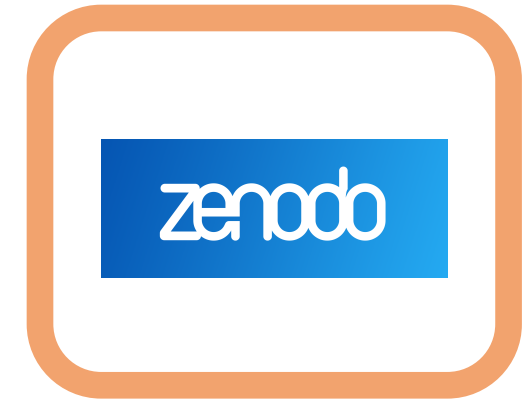
# Research corpora & content-based search



# Archiving and re-using datasets



**SIMSSA DB**



## Towards the interface

# SIMSSA Database

### Search

Powerful content based search for scores in symbolic notation with metadata.

### Download

Add scores to your shopping cart and download only the files you need.

### Upload

Upload your symbolic music files!



# Thank you!



<https://github.com/ELVIS-Project/simssadb>



@simssaproject



emily.hopkins@mcgill.ca



Social Sciences and Humanities  
Research Council of Canada

Conseil de recherches en  
sciences humaines du Canada

Canada



McGill



Schulich School of Music  
École de musique Schulich

DDMAL

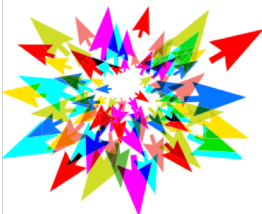
DISTRIBUTED DIGITAL MUSIC  
ARCHIVES & LIBRARIES LAB



Centre for Interdisciplinary Research  
in Music Media and Technology

Fonds de recherche  
Société et culture

Québec



compute  
canada

calcul  
canada

